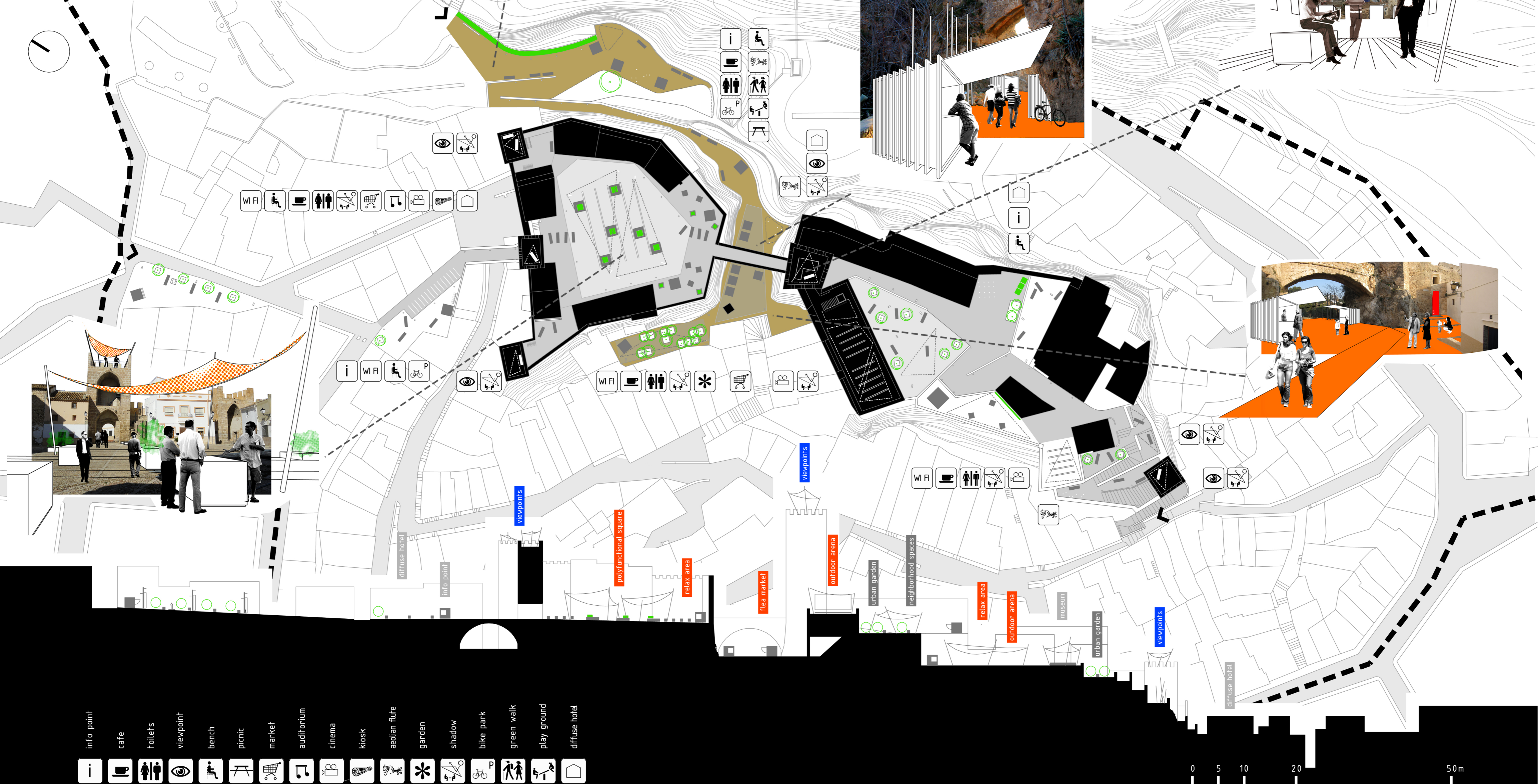
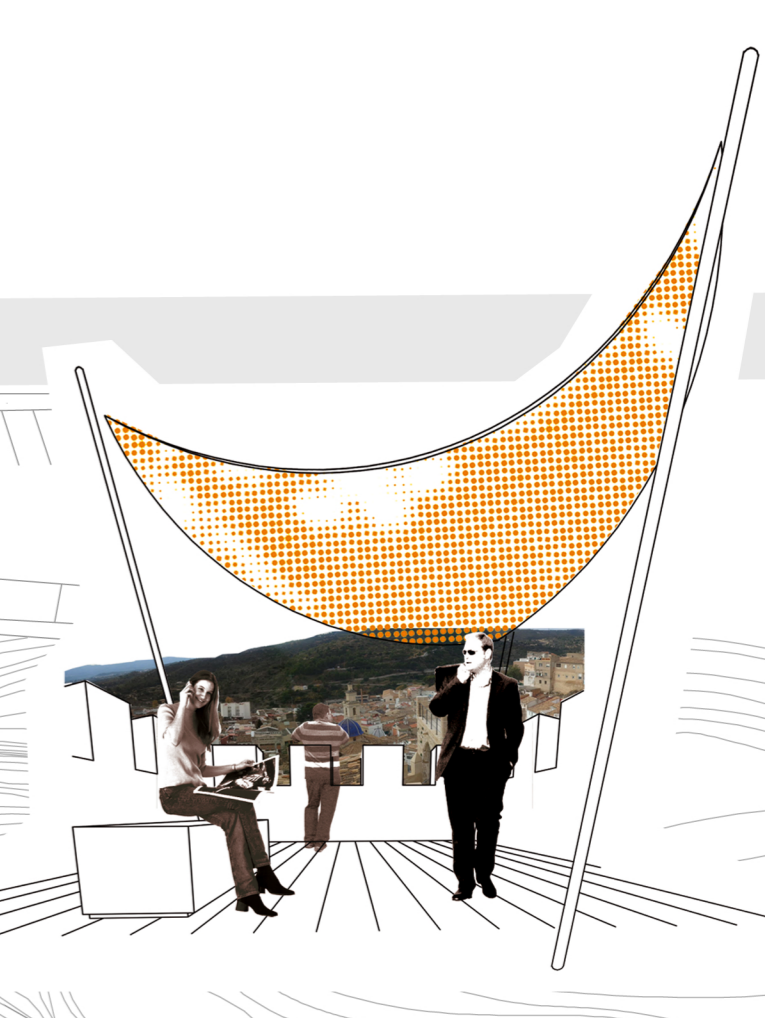


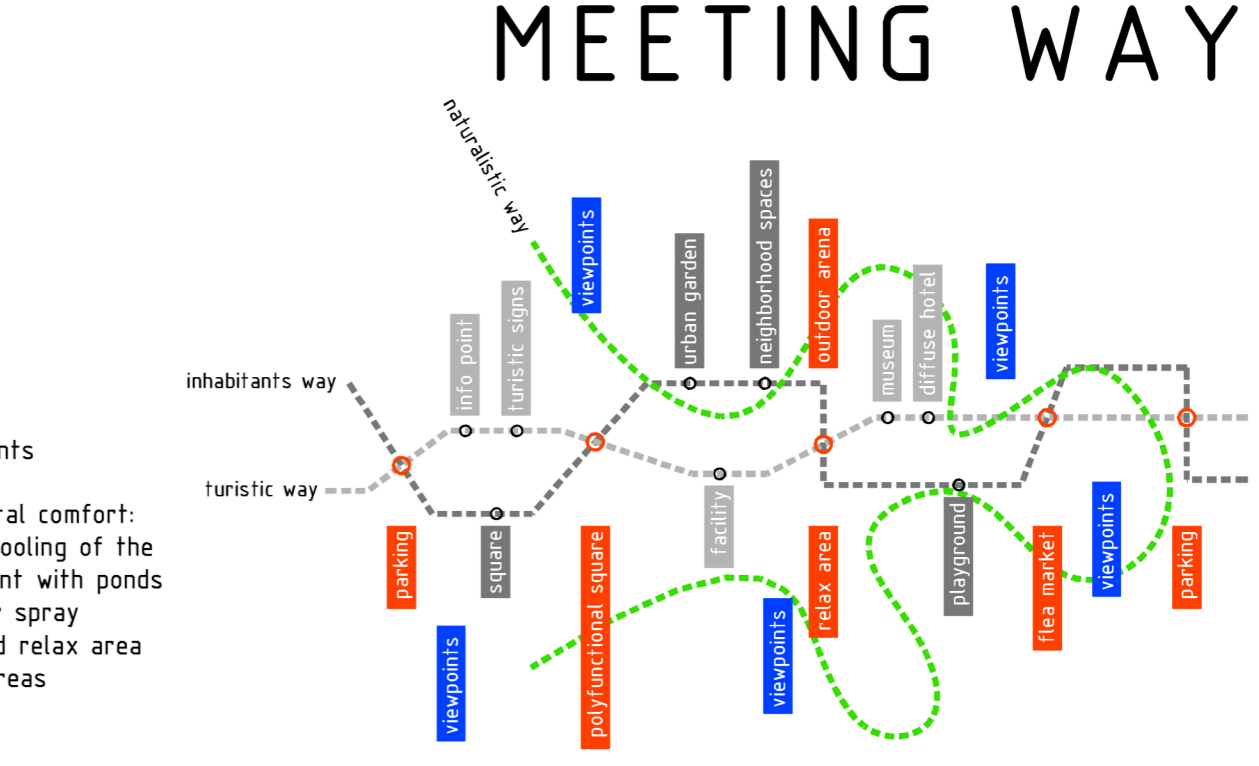
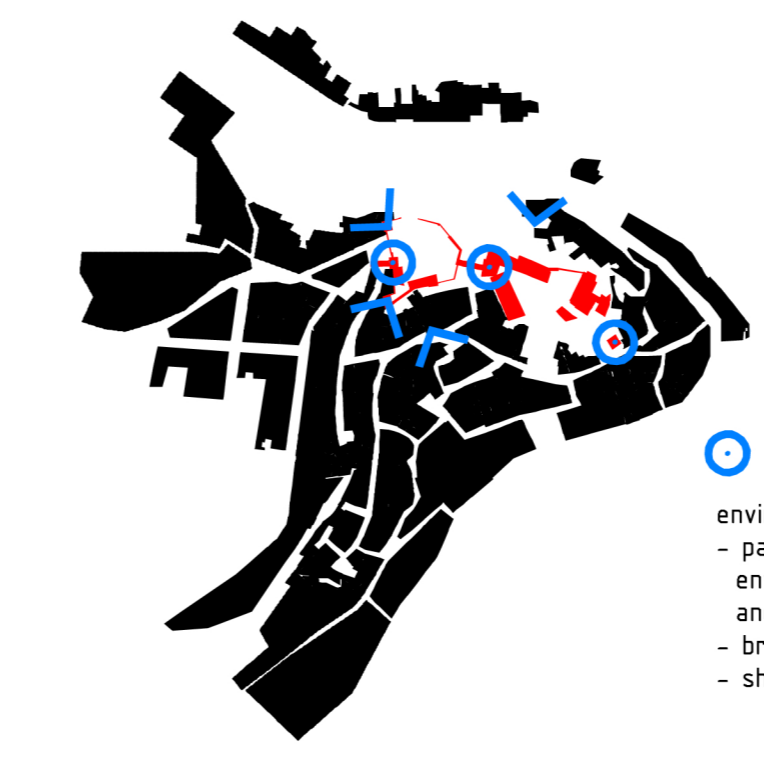
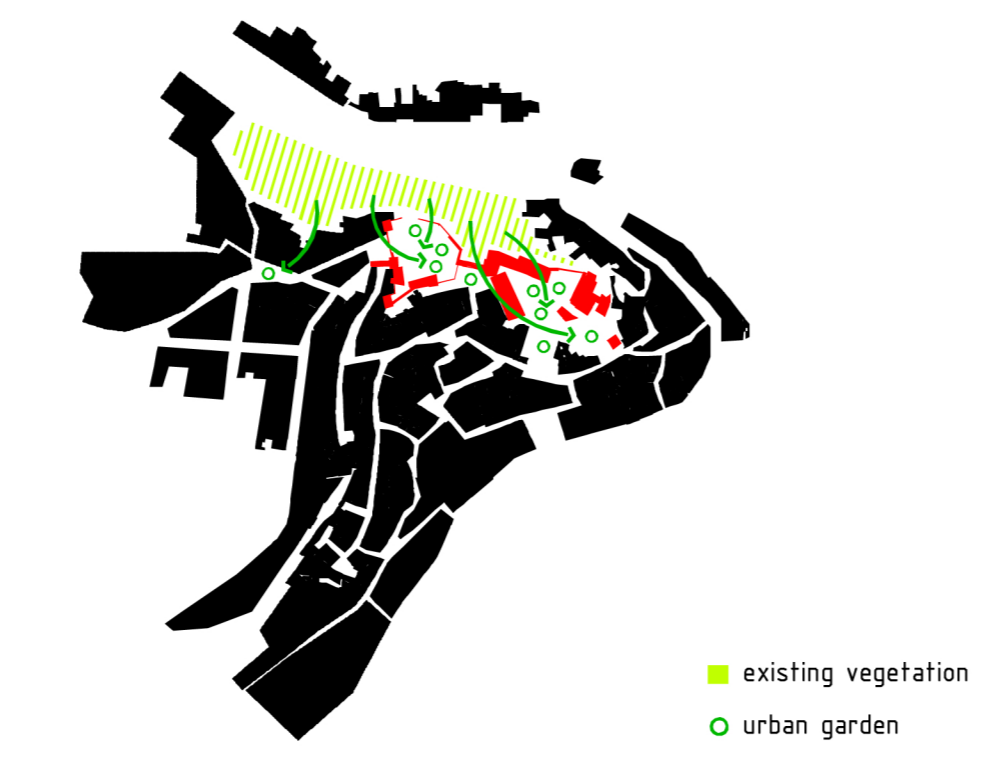
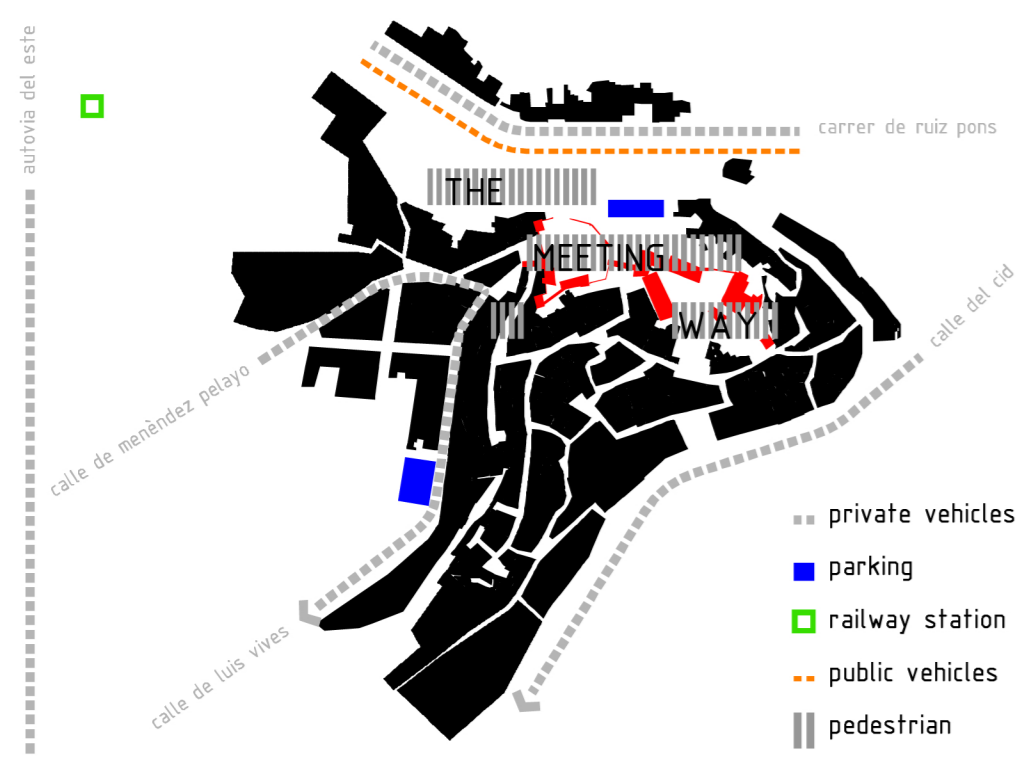
The project aims at enhancing the Buñol castle and its surroundings. This will be done by putting them in the system through a path. This is an extended walkway that crosses the whole area. Our project's goal is to create places used and lived by both inhabitants and tourists in sort of continuous cultural exchange. To achieve this goal a lot of spaces have been designed such as: a polyfunctional square, some viewpoints, relax areas, markets, outdoor arenas, urban gardens and playgrounds. Moreover those places should be seen as the crossing points of the two routes.

Il progetto mira a valorizzare il castello di Buñol e le zone limitrofe, attraverso un percorso che possa mettere in relazione queste due aree. Obiettivo del progetto è quello di creare luoghi frequentati e vissuti sia dai residenti del borgo che dai turisti come in una sorta di continuo scambio culturale. Questo fine sarà raggiunto attraverso la realizzazione di: piazze polifunzionali, punti panoramici, zone relax, mercati, arene all'aperto, orti urbani e aree dedicate al gioco. Questi spazi comuni saranno il risultato dell'intersezione di due percorsi, uno dedicato ai residenti e l'altro ai turisti.



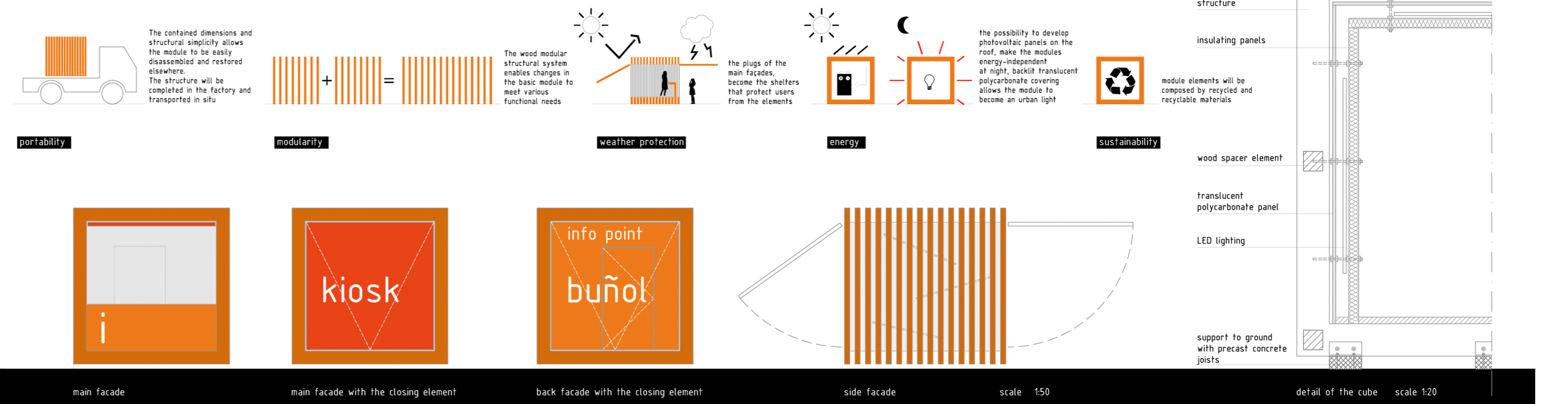
- info point
- cafe
- follets
- viewpoint
- bench
- picnic
- market
- auditorium
- cinema
- kiosk
- aeolian flute
- garden
- shadow
- bike park
- green walk
- play ground
- diffuse hotel

0 5 10 20 50m



- ### elements
- | element  | materials           | features   |
|----------|---------------------|--|
| platform | wood, concrete      | platforms are areas that you can find along the paths, they are made of the same material of the paths (see asphalt in the old town, or stabilized earth in the green area) but differ from those for surface treatment  |
| volume   | wood, polycarbonate | these are small modular volumes made of wood and polycarbonate, cubes contain various functions useful for tourists as well as for inhabitants: info point, cafe, toilet, kiosk  |
| bench    | wood                | along the way or in the squares you can sit on a wooden bench to relax or enjoy the view   |
| light    | LED                 | light points differ depending on the location: small markers along the path, streetlights in the squares and streets, lamps that are grouped as needs  |
| pole     | aluminum            | this aluminum poles characterize the landscape, they can be landmarks, banners, aeolian flutes or support large sails designed to shade the squares  |
| green    | various plants      | vegetation characterizes the lower path, but green is also present in the castle: citrus trees and aromatic plants such as mint, rosemary, basil, chili, invade with their colors and fragrances the castle. Citrus fruits and aromatic plants can be used by the inhabitants, so that the old town becomes a diffuse urban garden |

### THE CUBES



- ### multi purpose square
- square**: plants are moved to set up the market with stalls for the sale of local products
  - market**: kiosks sell newspapers, coffee and tapas
  - expo**: plants, banners and panels are placed to organize events and outdoor exhibitions
  - arena**: kiosks sell good appetizers made by local food
- moving plants you can make room for seats and stage of the arena, an open space designed for films and events
- kiosks sell tickets for the events, and offer wine and tapas to enjoy the evening



"Ordine degli Architetti PPC di Siracusa"  
 Capogruppo:  
 Arch. Alessandro Ferro  
 Gruppo di progettazione:  
 Arch. Irene Castelli, Dott. Gaetano Russo, Arch. Salvatore Sciuto

1° landscape architecture contest <40 paisea  
 Buñol, Valencia, Spagna  
 committente: Paisea, municipio di Buñol  
 consegna concorso: 29/07/2011